

Amarr® Classica®

Premium Steel Carriage House Garage Doors





Lucern design with Thames windows in Mahogany



Cortona design with Closed Square in Charcoal Gray with Nottingham ring handles and hinges



Santiago design with Madeira windows in True White/Gray with Blue Ridge handles and hinges



Looks can be deceiving. From a distance, you see wood. Up close, it's sturdy, durable, low-maintenance steel. The Amarr Classica collection of carriage house doors. Classic carriage house styles that go up and down like traditional garage doors. Unique three-section tall designs, instead of four, help deliver a more authentic carriage house look. Deception never looked so good.



Northampton design with Madeira windows in Walnut with Canterbury handles and hinges



Cortona design with Madeira windows in Sandtone/Terratone with Canterbury handles



Lucern design with Rhine windows in Sandtone/Wicker Tan with Blue Ridge handles and hinges

Colors



*Odd heights only available in Amarr Classica CL3000.
†Price upcharge applies; odd heights not available.
‡Price upcharge applies.



TWO-TONE PAINT OPTIONS[‡]

PANEL	BASE DOOR							
	TRUE WHITE	ALMOND	WICKER TAN	SANDTONE	TERRATONE	CHARCOAL GRAY	DARK BROWN	BLACK
TRUE WHITE								
ALMOND								
WICKER TAN								
SANDTONE								
TERRATONE								
CHARCOAL GRAY								
DARK BROWN								
BLACK								
HUNTER GREEN								
GRAY								

Amarr Classica® steel doors are pre-painted; for custom colors, exterior latex paint must be used. Visit amarr.com for instructions on painting.

Cover: Northampton design with Thames windows in True White with Blue Ridge handles and hinges

LUCERN



CLOSED ARCH (L1)



CLOSED ARCH (L1)



CLOSED SQUARE (L2)



DANUBE (L4)*



MADEIRA (L5)*



NILE (L6)*



RHINE (L7)*



SEINE (L8)*



THAMES (L10)*



CLEAR (LC)



AMERICANA (L57)†



JARDIN (L75)†



TRELLIS (L76)†

VALENCIA



CLOSED ARCH (V1)



CLOSED ARCH (V1)



CLOSED SQUARE (V2)



DANUBE (V4)*



MADEIRA (V5)*



NILE (V6)*



RHINE (V7)*



SEINE (V8)*



THAMES (V10)*



CLEAR (VC)



AMERICANA (V57)†



JARDIN (V75)†



TRELLIS (V76)†

SANTIAGO



CLOSED ARCH (S1)



CLOSED ARCH (S1)



CLOSED SQUARE (S2)



DANUBE (S4)*



MADEIRA (S5)*



NILE (S6)*



RHINE (S7)*



SEINE (S8)*



THAMES (S10)*



CLEAR (SC)



AMERICANA (S57)†



JARDIN (S75)†

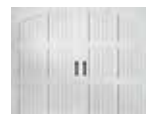


TRELLIS (S76)†

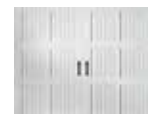
TUSCANY



CLOSED ARCH (T1)



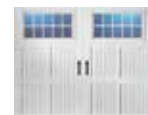
CLOSED ARCH (T1)



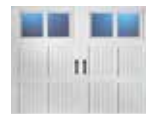
CLOSED SQUARE (T2)



DANUBE (T4)*



MADEIRA (T5)*



NILE (T6)*



RHINE (T7)*



SEINE (T8)*



THAMES (T10)*



CLEAR (TC)



AMERICANA (T57)†



JARDIN (T75)†



TRELLIS (T76)†

Photos shown are for standard door sizes of 8' and 9' wide and 7' and 8' tall. Check amarr.com for odd width and door height illustrations.

Glass Options

CLEAR (C)



1/8" (0.32cm) Tempered Double Strength

FROST (WF)†



OBSCURE (O)†



DARK TINT (WD)†



†Price upcharge applies.

Decorative Hardware

ALUMINUM

CANTERBURY



10-1/2" HANDLES



17" STRAP HINGES WITH CLAVOS



3-1/2" RING HANDLES



9" HANDLES

VERSAILLES



18" STRAP HINGES WITH CLAVOS



11" L-HINGE WITH CLAVOS

STAMPED STEEL



11" HANDLES



16" STRAP HINGES

Aluminum decorative strap hinges with clavos not recommended for arch openings.

NORTHAMPTON



CLOSED ARCH (N1)



CLOSED ARCH (N1)



CLOSED SQUARE (N2)



DANUBE (N4)*



MADEIRA (N5)*



NILE (N6)*



RHINE (N7)*



SEINE (N8)*



THAMES (N10)*



CLEAR (NC)



AMERICANA (N57)[†]



JARDIN (N75)[†]



TRELLIS (N76)[†]

BORDEAUX



CLOSED ARCH (B1)



CLOSED ARCH (B1)



CLOSED SQUARE (B2)



DANUBE (B4)*



MADEIRA (B5)*



NILE (B6)*



RHINE (B7)*



SEINE (B8)*



THAMES (B10)*



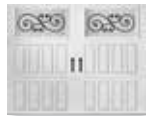
CLEAR (BC)



AMERICANA (B57)[†]



JARDIN (B75)[†]



TRELLIS (B76)[†]

CORTONA



CLOSED SQUARE (C2)



CLOSED ARCH (C1)



CLOSED SQUARE (C2)



DANUBE (C4)*



MADEIRA (C5)*



NILE (C6)*



RHINE (C7)*



SEINE (C8)*



THAMES (C10)*



CLEAR (CC)



AMERICANA (C57)[†]



JARDIN (C75)[†]



TRELLIS (C76)[†]

Construction

CL1000

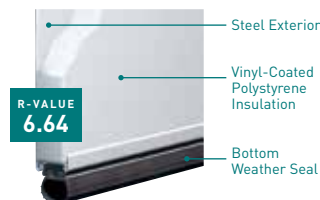
Single-Layer: Steel



- Heavy-duty Exterior Steel
- Durable, Reliable, Low Maintenance

CL2000

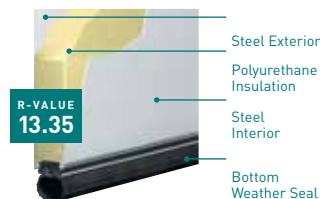
Double-Layer: Steel + Insulation



- Heavy-duty Exterior Steel
- Durable, Reliable, Low Maintenance
- Environmentally Safe Polystyrene Thermal Insulation with Vinyl Backing
- Energy Efficient
- Quiet Operation

CL3000

Triple-Layer: Steel + Insulation + Steel



- Heavy-duty Exterior and Interior Steel
- Durable, Reliable, Low Maintenance
- Environmentally Safe Polyurethane Thermal Insulation
- Superior Energy Efficient
- Extra Quiet Operation

* Window inserts shown on Clear glass. Design also available with Obscure, Frost or Dark Tint glass.
[†] Tempered obscure glass with baked-on ceramic design. Design visibility varies due to lighting.

MAGNETIC ABS VINYL

ALPINE



11" HANDLES

CASTLE ROCK



12" HANDLES



16" STRAP HINGES

CLAVOS



1-3/4" CLAVOS

MAPLE CREEK



11" HANDLES

18" STRAP HINGES

NOTTINGHAM



10" tall

4" RING HANDLES
(with removable
backer plate)

5" tall

18" STRAP HINGES

LIFETIME
LIMITED WARRANTY





Valencia design with Closed Square Custom painted by homeowner



Santiago design with Thames windows and Closed Arch in True White/Terratone



Tuscany design with Closed Arch in Golden Oak with Canterbury handles

YOUR LOCAL AMARR DEALER:

ENTRE/MATIC

Entrematic
165 Carriage Court
Winston-Salem, NC 27105
800.503.D00R
www.amarr.com



Door specifications and technical data subject to change without notice.

Sectional door products from Entrematic may be the subject of one or more U.S. and/or foreign, issued and/or pending, design and/or utility patents.

Entrematic, Amarr and Classica as words and logos are trademarks owned by Entrematic Group AB or companies within the Entrematic Group.

©Entrematic Group AB 2019. All rights reserved.
Printed in USA Form #6430419/10M/GVS